

### INCLUDES

- Ratchet cap

### UNIQUE FEATURES

- Smallest cap available with plastic threads
- All-plastic design
- Multiple vent options
- Variety of graphics available
- Complies with California Air Resource Board (CARB) regulations and Environmental Protection Agency (EPA) regulations
- Compatible with Kelch Universal Tether

### REASONS TO CHOOSE

- Ergonomic styling
- Ideal for high-volume applications
- Well suited for walk-behind mowers and handheld lawn & garden applications
- Offers audible and tactile feedback with a permanent tether
- Ratchet torque limits potential to over tighten cap



FOR MORE INFORMATION, CALL A KELCH REPRESENTATIVE TODAY AT **877.944.5699**

**KELCH.COM**



### COMPOSITION

- Engineered thermoplastics
- All-plastic cap designed for use in corrosive environments

### VENTING OPTIONS

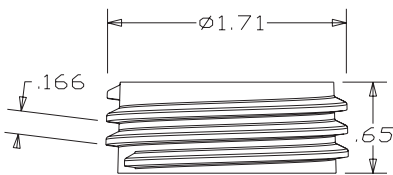
- No vent
- Internal vent (0.062 dia. hole)

### THREAD SIZE

- 1 3/4" modified buttress thread with 6 threads per inch
- Modified buttress thread allows for expansion and contraction of filler neck

### FILLER NECK SPECIFICATION

Kelch print 4340



### TETHER OPTION

- Kelch Universal Tether (Internal tether not sold separately)

### PAD PRINTING OPTIONS FOR CAPS

- Standard and custom pad printing available

### GASKET OPTIONS

- Nitrile
- FKM



Revised 04/15

Disclaimer: At Kelch, we make quality products. We do not know how you will use our product. You, the customer, are in the best position to know the uses and conditions to which our products will be subjected.

You are responsible for identifying and performing tests necessary to assure that our product is safe and suitable for the application you have chosen. You are in the best position to know how our product will perform in your application, we ask that you hold us harmless from any claims that result from our product being used in an unsafe or unsuitable way.

FOR MORE INFORMATION, CALL A KELCH REPRESENTATIVE TODAY AT **877.944.5699**

**KELCH.COM**