

UNIQUE FEATURES

- Designed to fit industry standard dispensing equipment (Bunn, Cornelius and others) for a cost-effective solution for low and high-volume operations
- Laser-etched with manufacture date and location for traceability
- Automated inspection system verifies presence and proper assembly of all components
- Designed with interior o-ring to prevent leaking around the ball
- Well-defined threads aid in application and provides a secure, leak-proof seal
- Manufactured in a GMP (Good Manufacturing Practices) environment



FOR MORE INFORMATION, CALL A KELCH REPRESENTATIVE TODAY AT **877.944.5699**

KELCH.COM



COMPOSITION

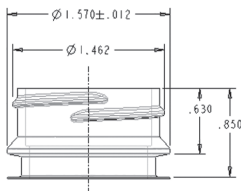
- 302 stainless steel spring
- FDA-grade plastic
- Precision ground ball
- FDA-grade o-rings

TORQUE SPECIFICATIONS

- Recommended installation torque of 20 to 30 inch-pounds (not to exceed 35 inch-pounds)

THREAD SPECIFICATIONS

Kelch Print 6305



KELCH EXPERIENCE

Along with its parent group Bemis Manufacturing, Kelch boasts 150 years of combined manufacturing experience.

Our proprietary products are used in a number of industries including: foodservice, recreation, marine, construction and lawn and garden. These products are used to dispense, contain, measure and manage fluids and air. Since 1993, Kelch has produced more than 50 million liquid dispensing closures for the foodservice industry.

Our experience, proven track record and continued investment in technology and training, make us the ideal partner to solve your dispensing issues.



Revised 10/19

Disclaimer: At Kelch, we make quality products. We do not know how you will use our product. You, the customer, are in the best position to know the uses and conditions to which our products will be subjected.

You are responsible for identifying and performing tests necessary to assure that our product is safe and suitable for the application you have chosen. You are in the best position to know how our product will perform in your application, we ask that you hold us harmless from any claims that result from our product being used in an unsafe or unsuitable way.

FOR MORE INFORMATION, CALL A KELCH REPRESENTATIVE TODAY AT **877.944.5699**

KELCH.COM