

### INCLUDES

- Cap

### UNIQUE FEATURES

- Smallest cap available with plastic threads
- All plastic design
- Multiple vent options
- Variety of graphics available

### REASONS TO CHOOSE

- Compact size
- Long-lasting durability
- Ideal for high-volume applications



FOR MORE INFORMATION, CALL A KELCH REPRESENTATIVE TODAY AT **877.944.5699**

**KELCH.COM**



### COMPOSITION

- Engineered thermoplastics
- All-plastic cap designed for use in corrosive environments

### VENTING OPTIONS

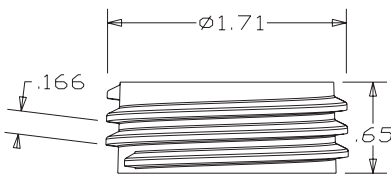
- No vent
- Top vent (0.062 dia. hole)
- Covered vent, chimney style
- Covered vent with one-way valve (venting into tank)

### THREAD SIZE

- 1 3/4" modified buttress thread with 6 threads per inch
- Modified buttress thread allows for expansion and contraction of filler neck

### FILLER NECK SPECIFICATION

Kelch print 4340



### MOLDED-IN GRAPHICS

Options include:

- Custom molded-in graphics

### GASKET OPTIONS

- Nitrile
- FKM

### PAD PRINTING OPTIONS FOR CAPS

- Standard and custom pad printing available



5211



5403



5208

Revised 05/24

Disclaimer: At Kelch, we make quality products. We do not know how you will use our product. You, the customer, are in the best position to know the uses and conditions to which our products will be subjected.

You are responsible for identifying and performing tests necessary to assure that our product is safe and suitable for the application you have chosen. You are in the best position to know how our product will perform in your application, we ask that you hold us harmless from any claims that result from our product being used in an unsafe or unsuitable way.

FOR MORE INFORMATION, CALL A KELCH REPRESENTATIVE TODAY AT **877.944.5699**

**KELCH.COM**